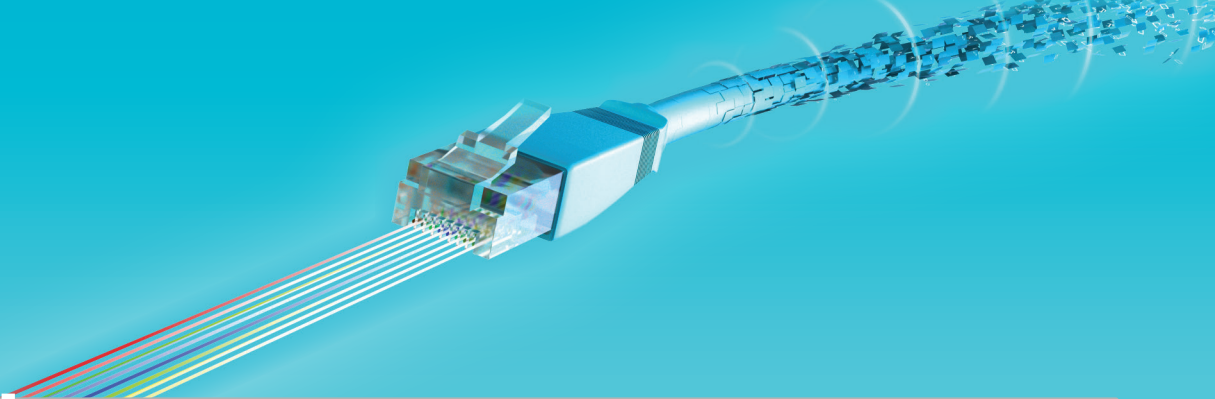


# NBASE-T

## ALLIANCE<sup>SM</sup>



### MEMBERSHIP

#### Who:

An industry-wide consortium of 45+ companies representing all major facets of networking infrastructure such as access points, Ethernet switching, and computing, as well as the necessary technologies required to deliver these applications including PHYs, processors, connectors, controllers, switches, FPGAs, PoE ICs, cables and test equipment.

#### Why:

To enable the development and deployment of products that support 2.5G/5GBASE-T Ethernet

#### What We Do:

- Publish optimizations and extensions to the specification (NBASE-T Downshift)
- Facilitating interoperability (Plugfests, tradeshows, UNH-IOL)
- Educate market about multiple applications of the NBASE-T technology
- Reviewing proposals from member companies of new ways to meet industry challenges with NBASE-T technology

#### Compatible with 2.5G/5GBASE-T Standard:

The IEEE 802.3bz standard, approved September 2016, is compatible with specifications published by the NBASE-T Alliance

### PARTNER COMPANIES AT 2017 INTEROP

AQUANTIA<sup>®</sup>

AUKUA  
SYSTEMS

CISCO<sup>™</sup>



FLUKE  
networks<sup>®</sup>

intel<sup>®</sup>

Microsemi

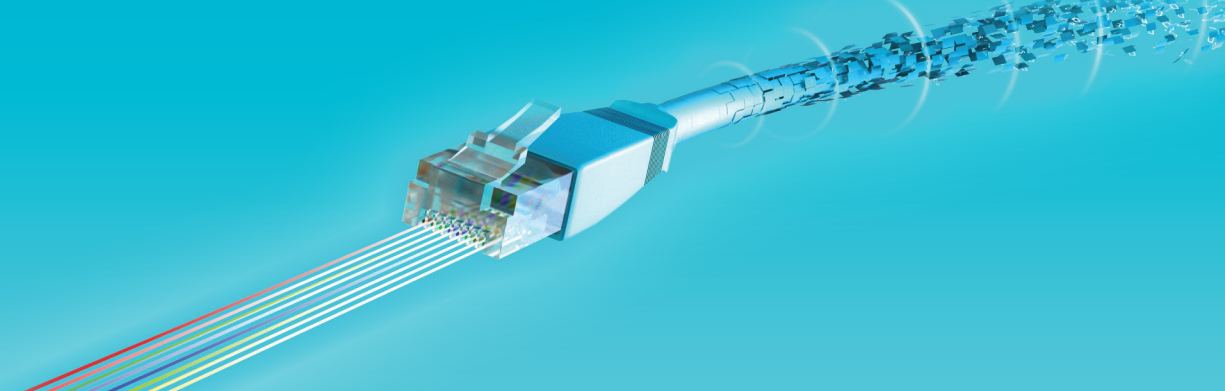
PANDUIT<sup>®</sup>  
infrastructure for a connected world

SPIRENT

iol  
University of New Hampshire  
InterOperability  
Laboratory

# NBASE-T

## ALLIANCE<sup>SM</sup>



### DEMONSTRATION

#### Our Demonstration Shows:

NBASE-T™ technology deployed across several components of an enterprise network: wireless access points, switches and client devices etc. and connected via Cat5e, Cat6 and Cat6a cables in lengths extending up to 100m and in a worst case 6A1 bundled configuration.

Interoperability between several NBASE-T enabled products in several markets: Enterprise network equipment such as wireless access points, switches, and client devices; consumer market devices including digital media players and smart TVs; and test and measurement solutions. All products are connected via Cat5e, Cat6 and Cat6a cables in lengths extending up to 100m. A worst case 6-Around-1 bundle configuration is also used, demonstrating network connectivity in stressful traffic conditions.

#### Demonstrated Applications Include:

- 802.11ac Wave2 access points
- Enterprise and SMB switches
- NAS devices
- PC platforms
- Server NICs
- Traffic generators and packet analyzers
- PoE endpoints

### DIAGRAM

